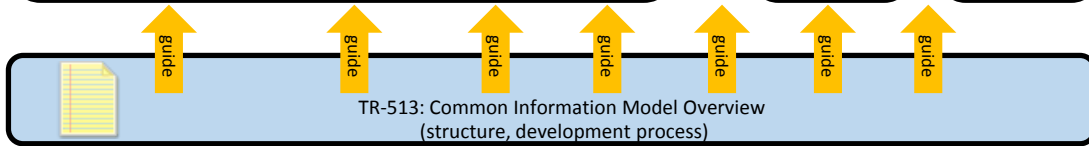
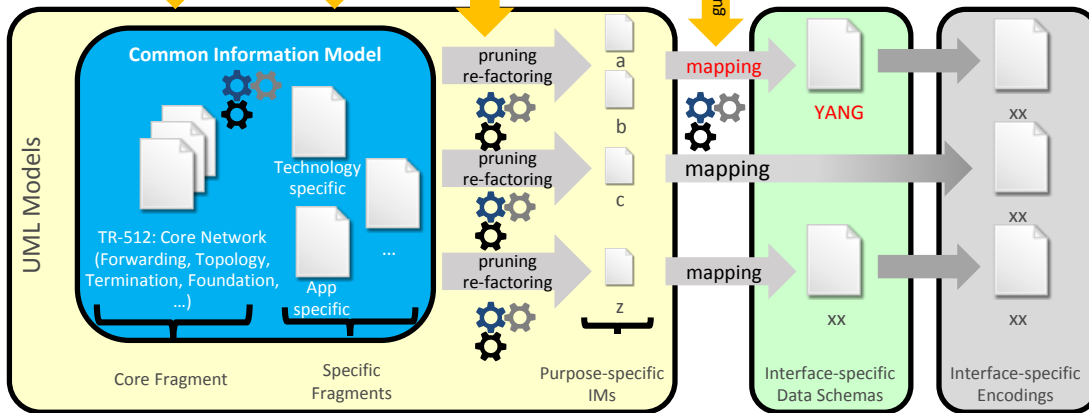
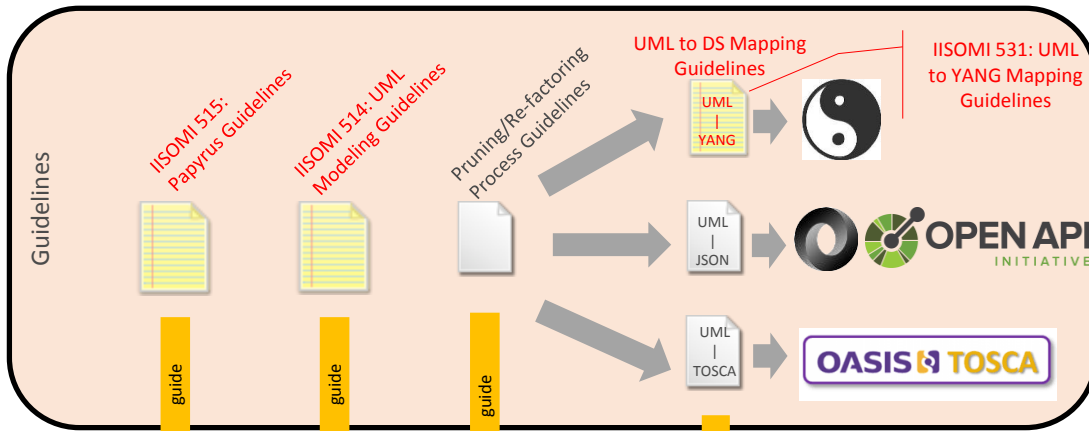


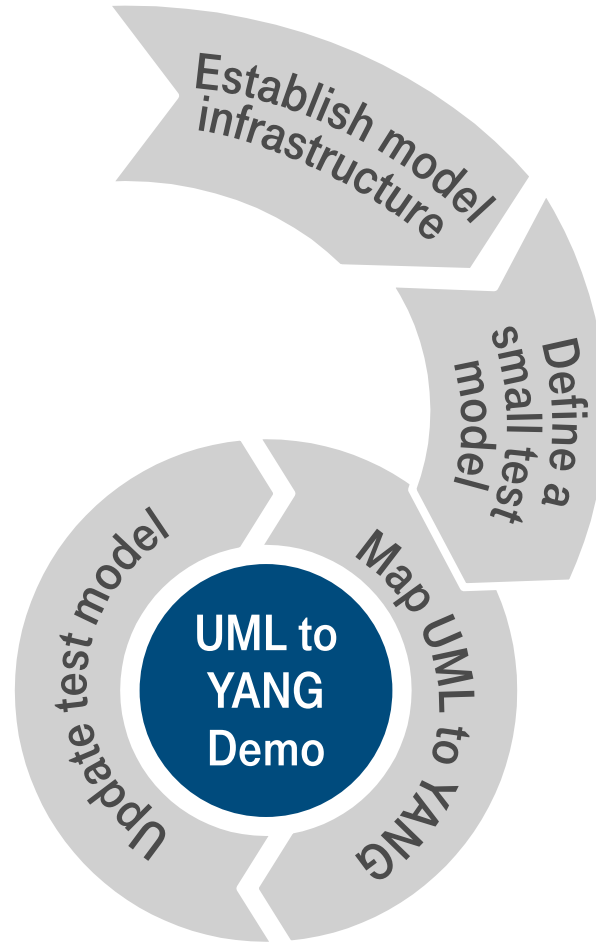


# IISOMI UML to YANG Demo

November 8-9, 2017



# UML to YANG Demo Sequence



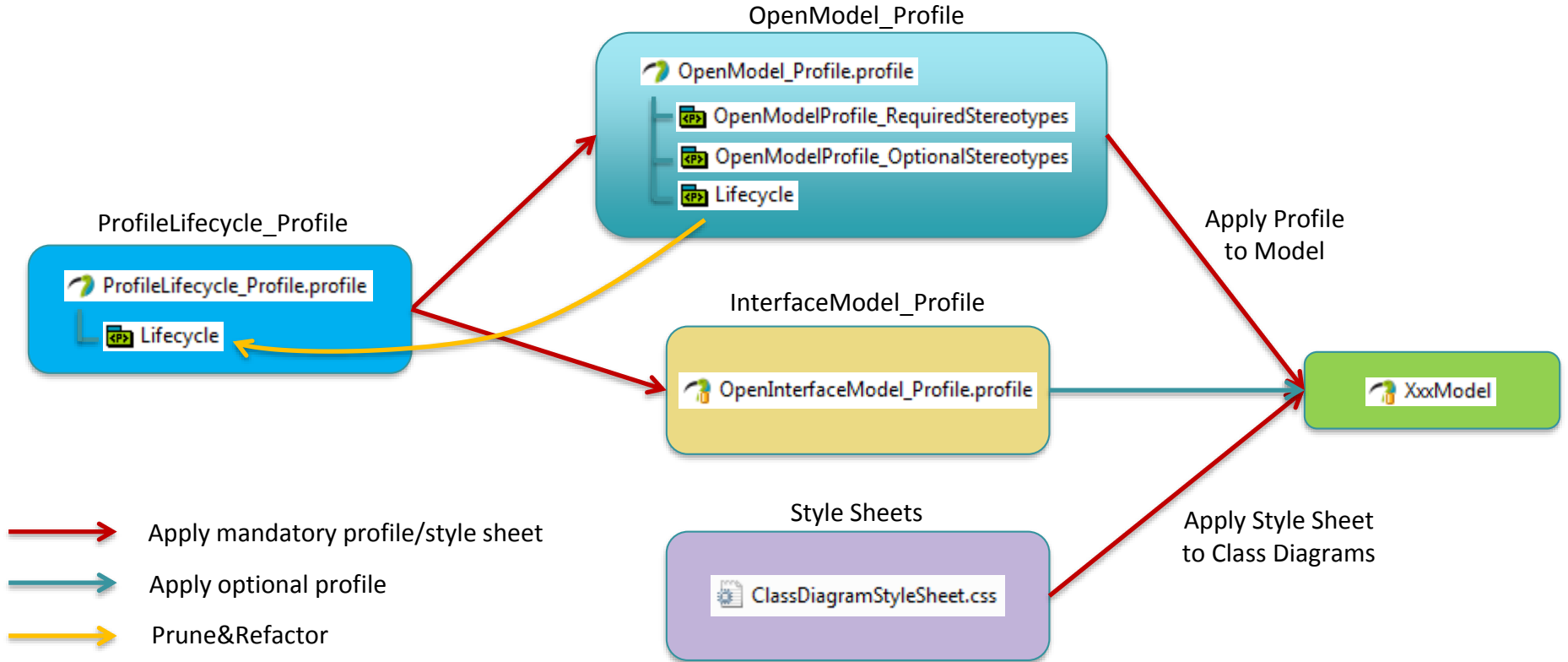
# Documentation

- UML Modeling Guidelines (IISOMI 514)
  - Last published version → [v1.2, Sept. 2016](#)
  - Latest working draft → [v1.3.04, Nov. 2017](#)
- UML Profiles and Style Sheets
  - OpenModelProfile, vo.2.13
  - OpenInterfaceModelProfile, vo.o.8
  - ProfileLifecycleProfile, vo.o.4
  - Style sheet for class diagrams
  - Github repository: [UmlProfiles](#)
- Papyrus Guidelines (IISOMI 515)
  - Last published version → [v1.2, Sept. 2016](#)
  - Latest working draft → [v1.3.02, Nov. 2017](#)
- UML to YANG Mapping Guidelines (IISOMI 531)
  - Last published version → [v1.0, Sept. 2016](#)
  - Latest working draft → [v1.1.05, Nov. 2017](#)
- UML to YANG Mapping Tool
  - Github repository: [UmlYangTools](#)

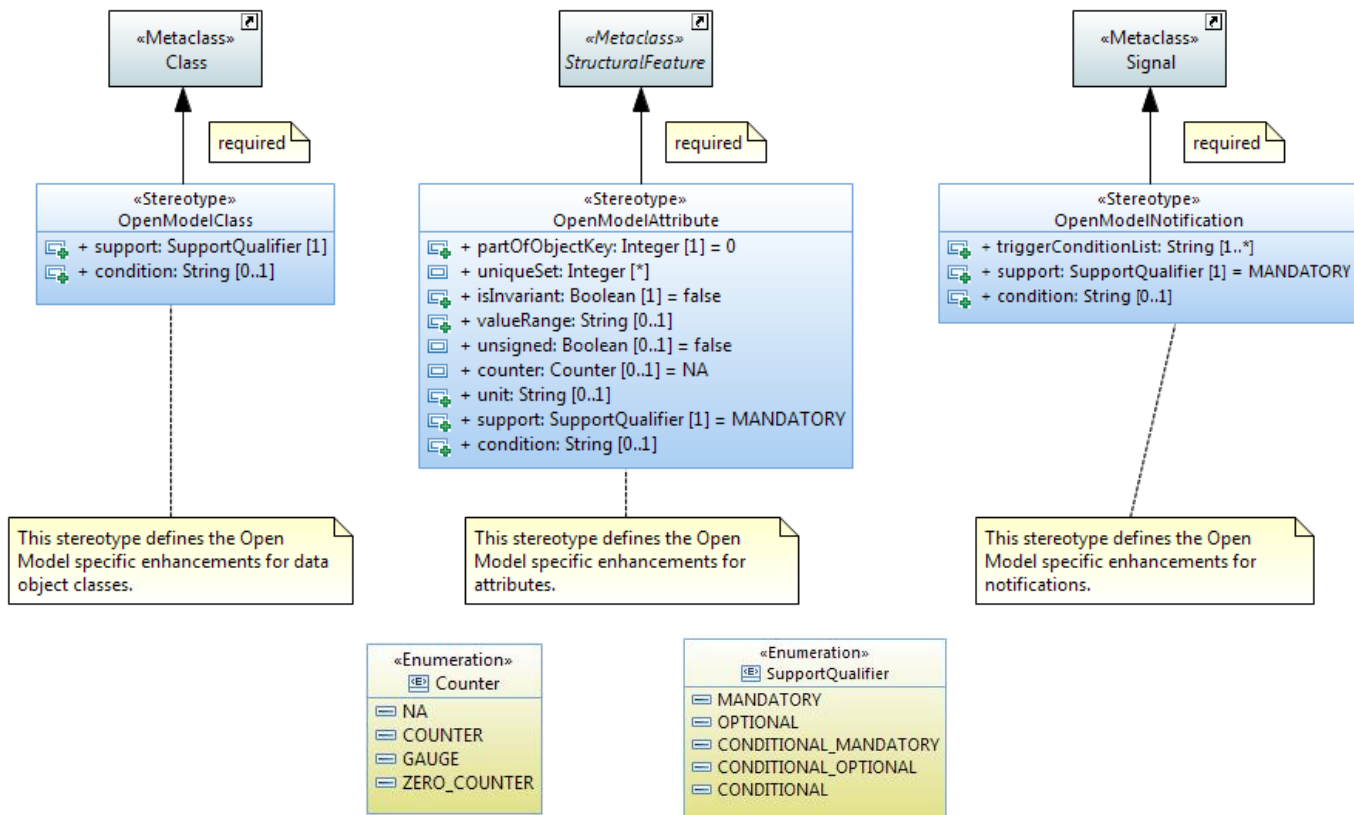


# UML Profiles

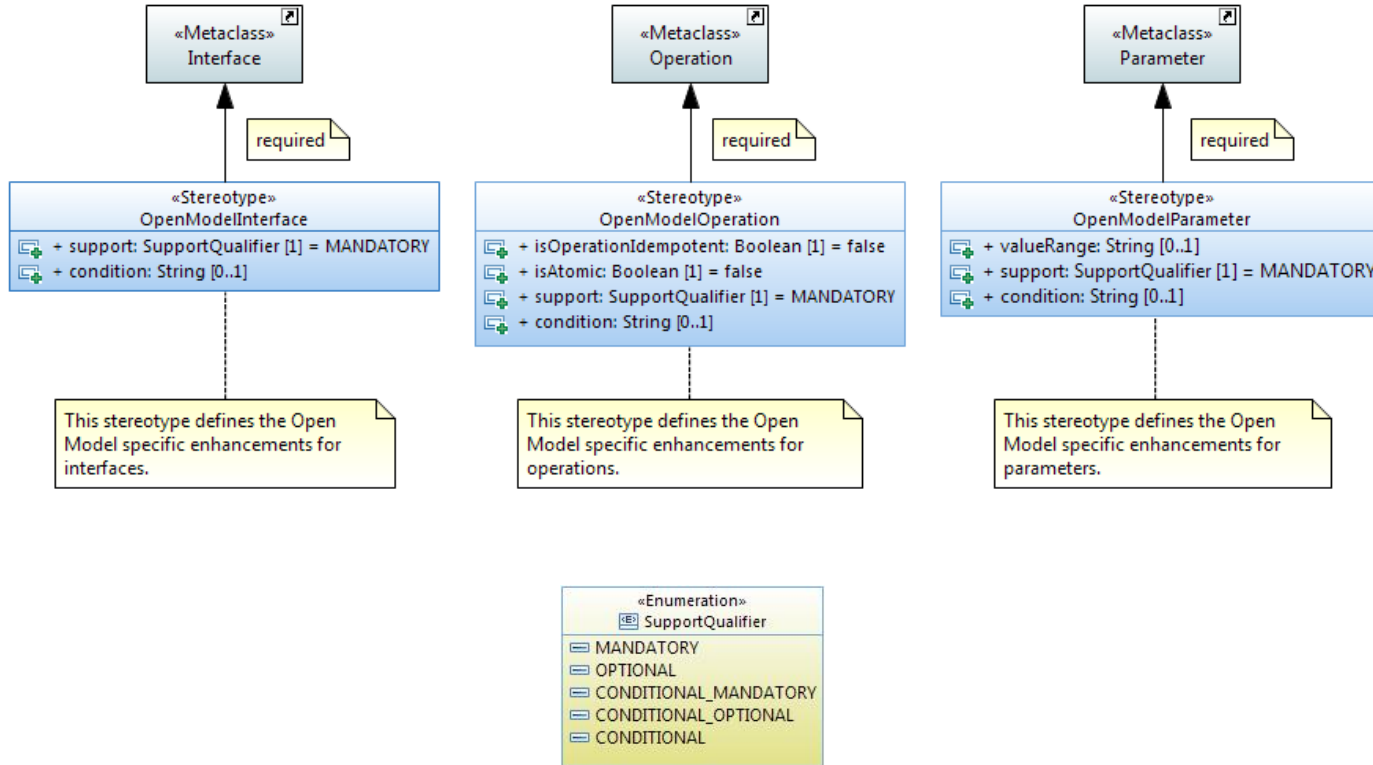
# UML Profiles



# OpenModel Profile: Required «Stereotypes» (1)

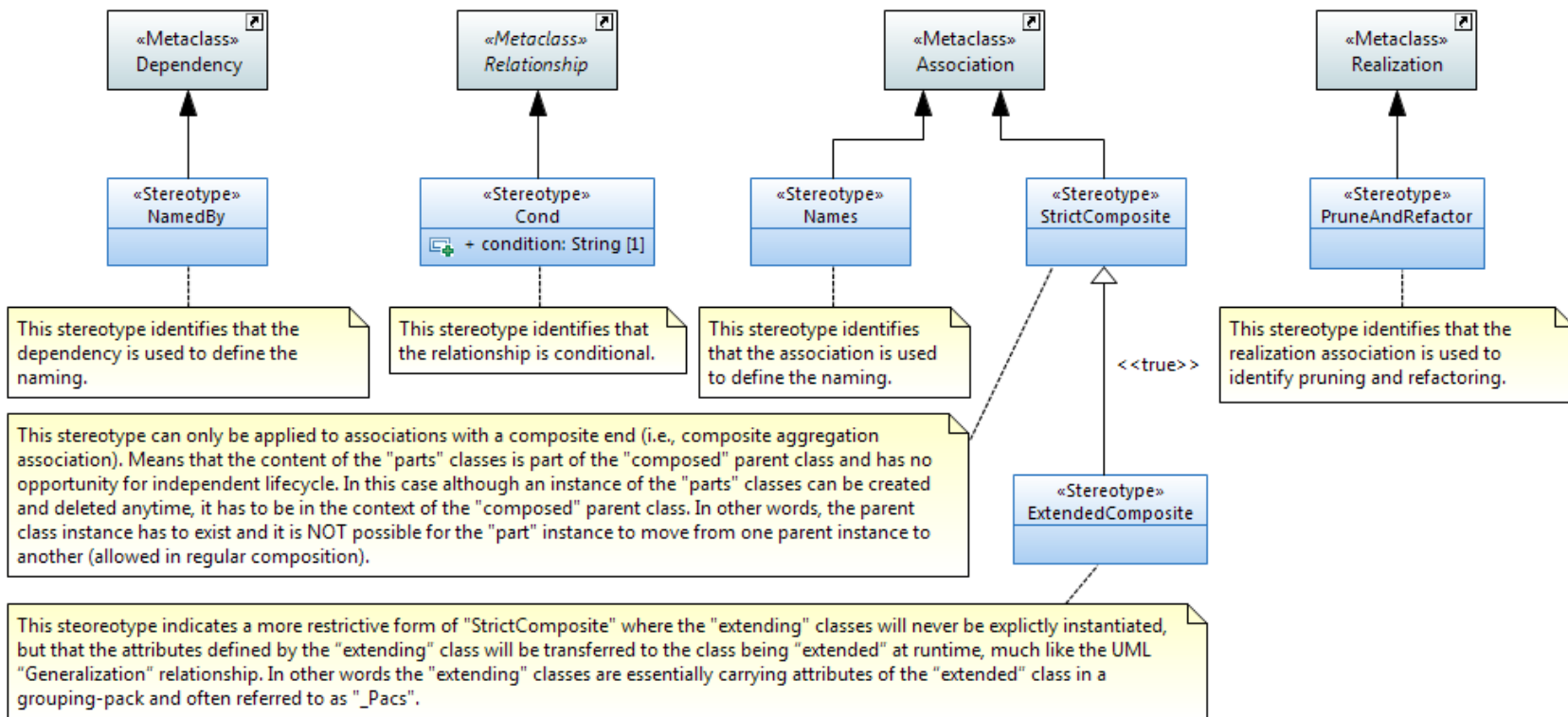


# OpenModel Profile: Required «Stereotypes» (2)

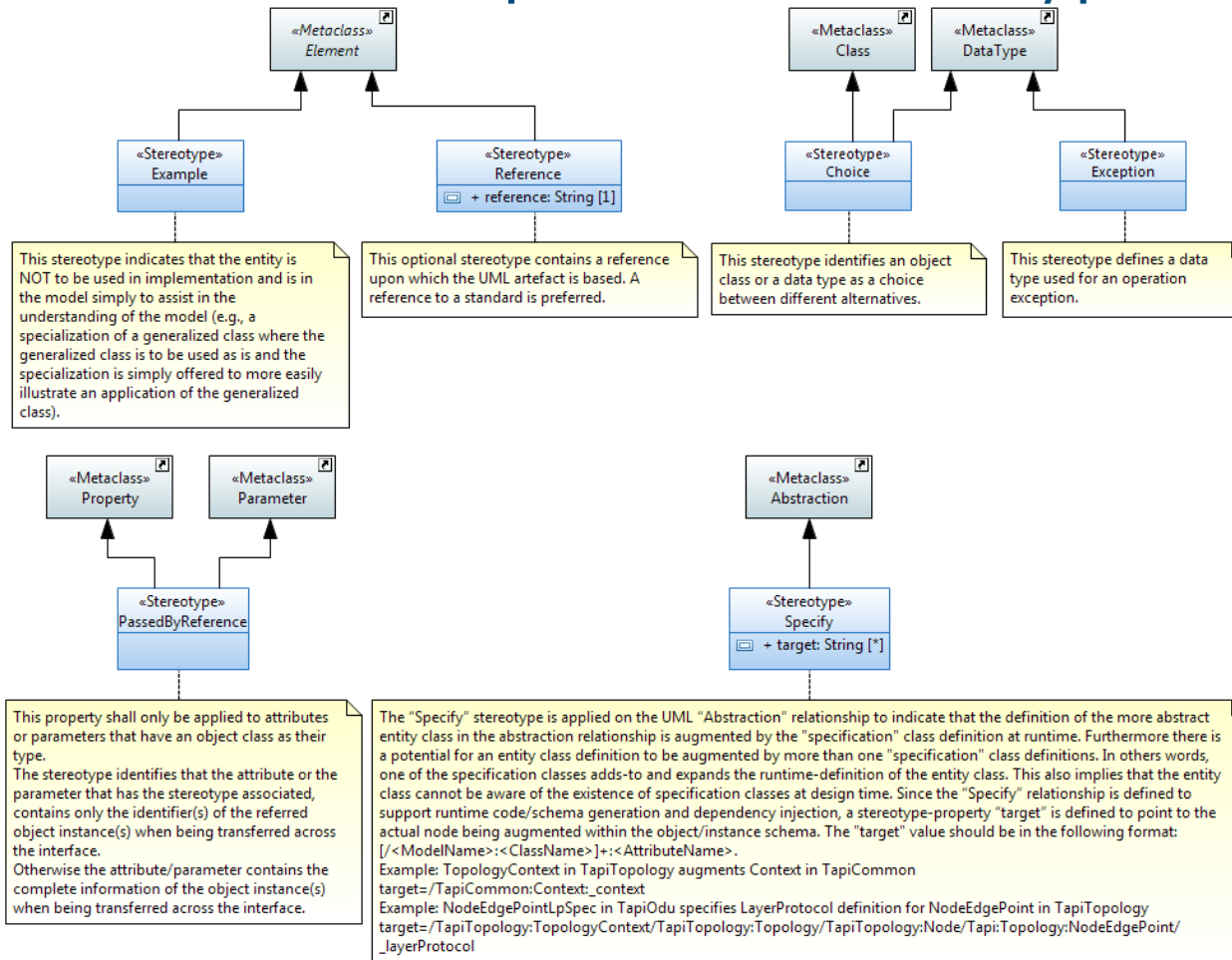




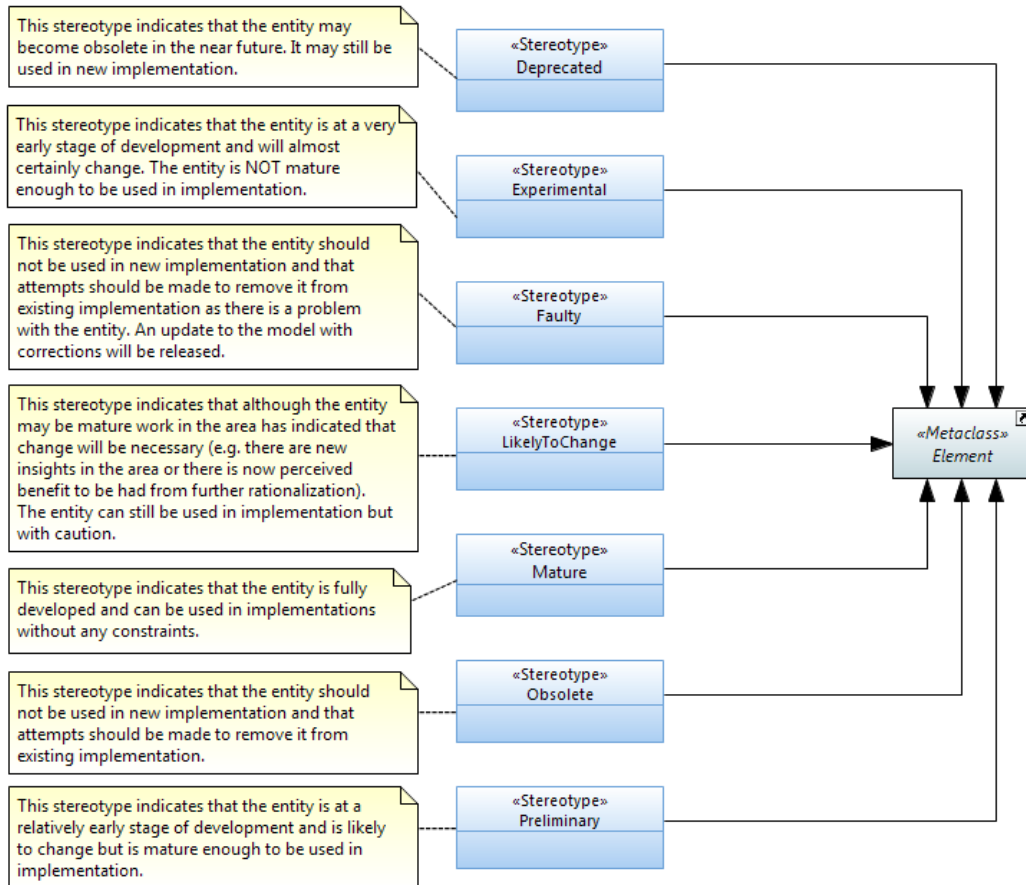
# OpenModel Profile: Optional «Stereotypes» (1)



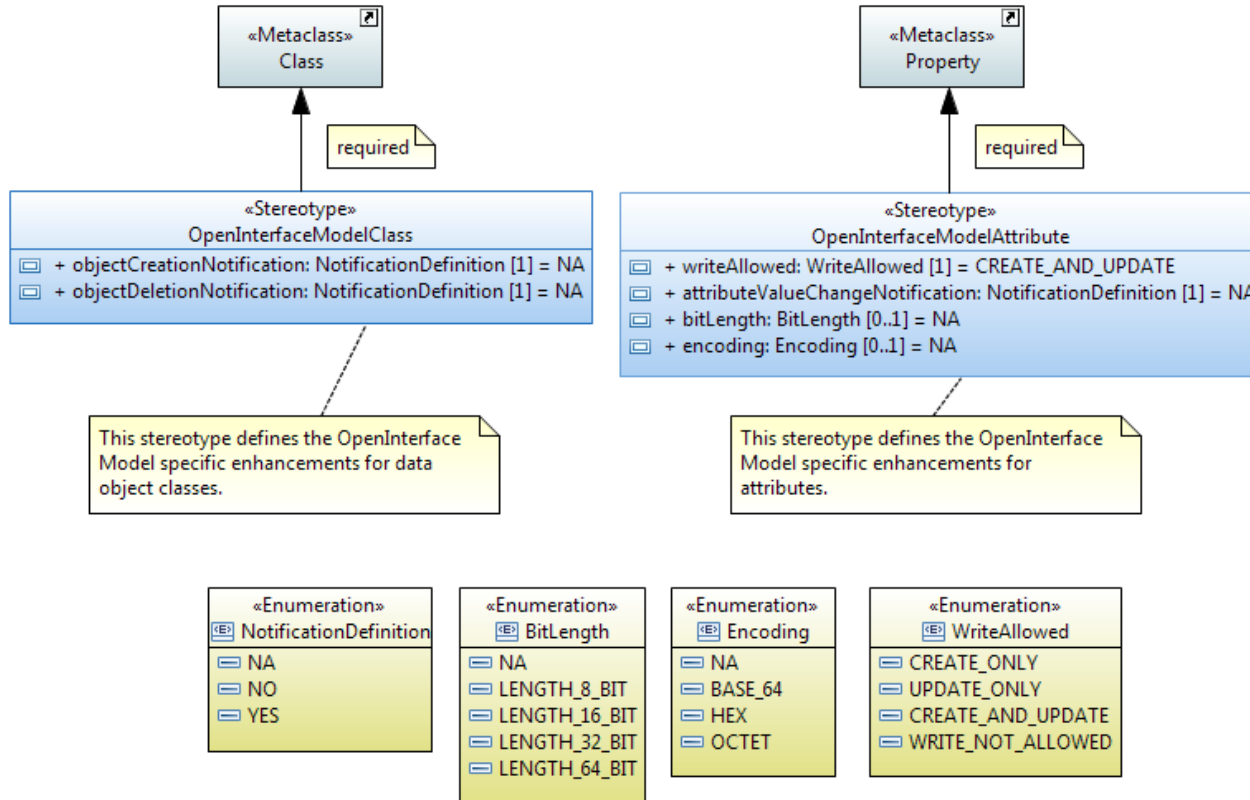
# OpenModel Profile: Optional «Stereotypes» (2)



# OpenModel Profile: Lifecycle «Stereotypes»



# OpenInterfaceModel Profile: Required «Stereotypes»



# OpenInterfaceModel Profile: Optional «Stereotypes»

